



Morgans

PROPERTY

102 Castlandhill Road, Rosyth, KY11 2DL

Offers Over £130,000

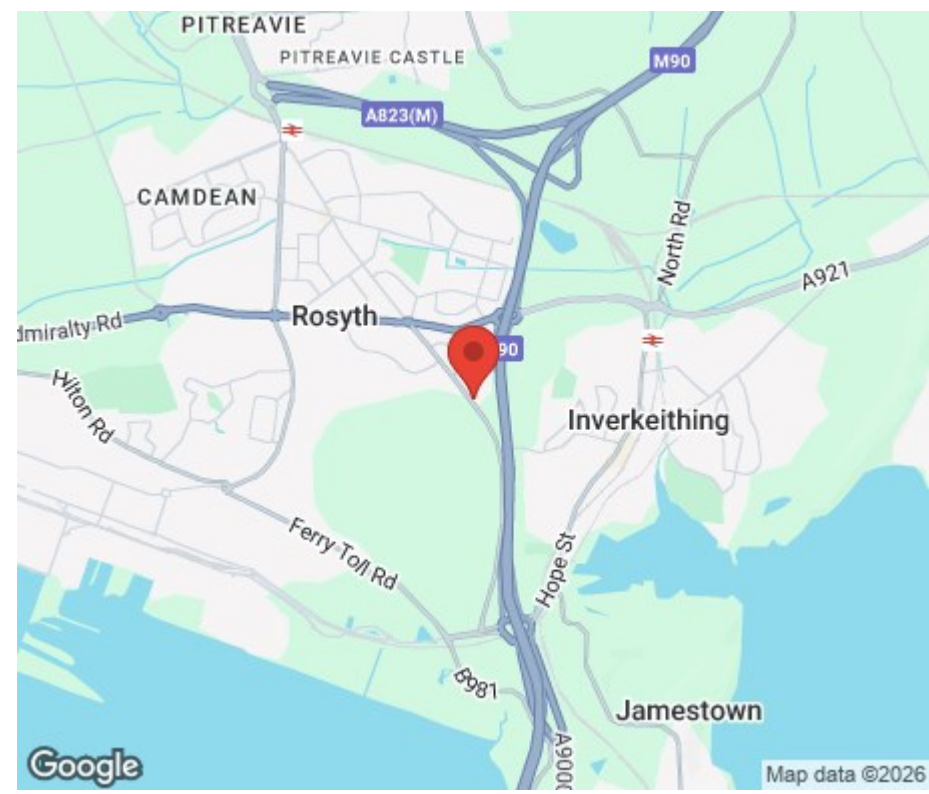






Ideal starter home and well appointed within one of Rosyth's most popular residential areas is this end terraced villa occupying an enviable plot with beautiful landscaped gardens to the front and rear providing a child and pet safe environment with patio area, shed and outdoor storage. The subjects briefly comprise entrance stairwell, lounge, kitchen, conservatory and shower room on the ground floor. On the upper level there are two double bedrooms and access to attic. There is double glazing and gas central heating throughout.





LOCATION

Rosyth is a popular town on the northern shore of the River Forth with a good selection of shops and services, which are easily accessible. There are four local Primary Schools and secondary schooling is available in nearby Dunfermline and Inverkeithing. An ideal commuter base with links to the motorway network. Easy access to the M90 and Ferrytoll Park and Ride. A short drive takes you to the City of Dunfermline which provides a larger selection of shops, schools, bars, restaurants and public transport of bus and rail links making this area an ideal commuter base to Edinburgh, throughout Fife and east central Scotland.

EXTRAS INC IN SALE / AGENTS NOTE

All floor coverings, blinds, bathroom and light fittings together with appliances and shed. No warranty is given on the appliances.

From 1st February 2022, residential properties in Scotland are required by law to have installed a system of inter-linked smoke alarms, carbon monoxide detectors and heat detectors (the "inter-linked system"). No warranty is given that any interlinked system has been installed in this property and interested parties should make their own enquiries.





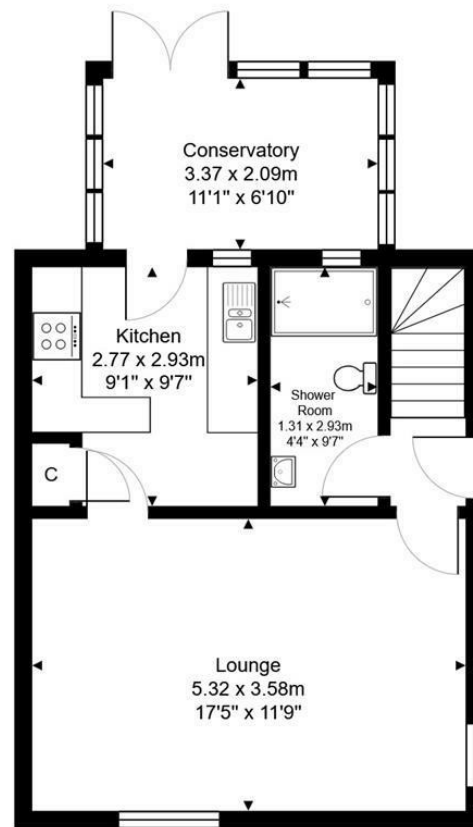


102 Castlandhill Road, Rosyth, KY11 2DL

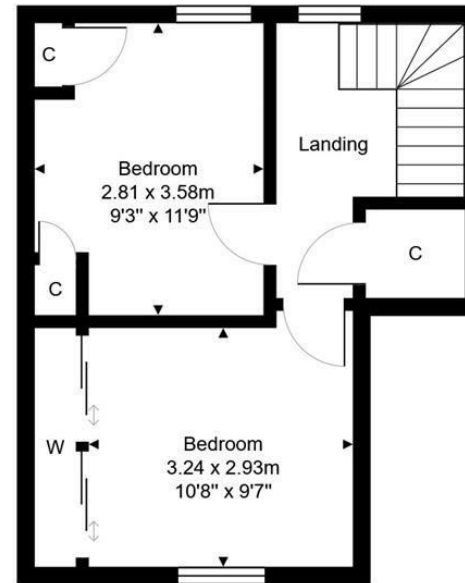
Total Area: 74.0 m² ... 796 ft²



All measurements are approximate and for display purposes only



Ground Floor



1st Floor



SOLICITORS | PROPERTY

33 East Port, Dunfermline, Fife, KY12 7JE

Tel: 01383 620222 Fax: 01383 621213

www.morganlaw.co.uk



espc

rightmove

Zoopla.co.uk

onTheMarket.com

s1homes.com



AGENTS NOTE These particulars do not form part of any contract and the statements or plans contained herein are not warranted nor to scale. Approximate measurements have been taken by electronic device at the widest point. Services and appliances have not been tested for efficiency or safety and no warranty is given as to their compliance with any Regulations. No movable items will be included in the sale.